

SUMMARY OF PUPIL PREMIUM EXPENDITURE 2021/22

Westfield Academy expects to receive £246,140 in pupil premium funding for the year ending August 31st 2022.

Type of PP	Number of students	% of school cohort
Deprivation	241	23.4
Service Child	58	5.7
Adopted	2	0.2
LAC	7	0.7
TOTAL	308	30%

In 2021/22 there are likely to be 241 students eligible for Pupil Premium due to deprivation, which makes up 23.4% of the school population.

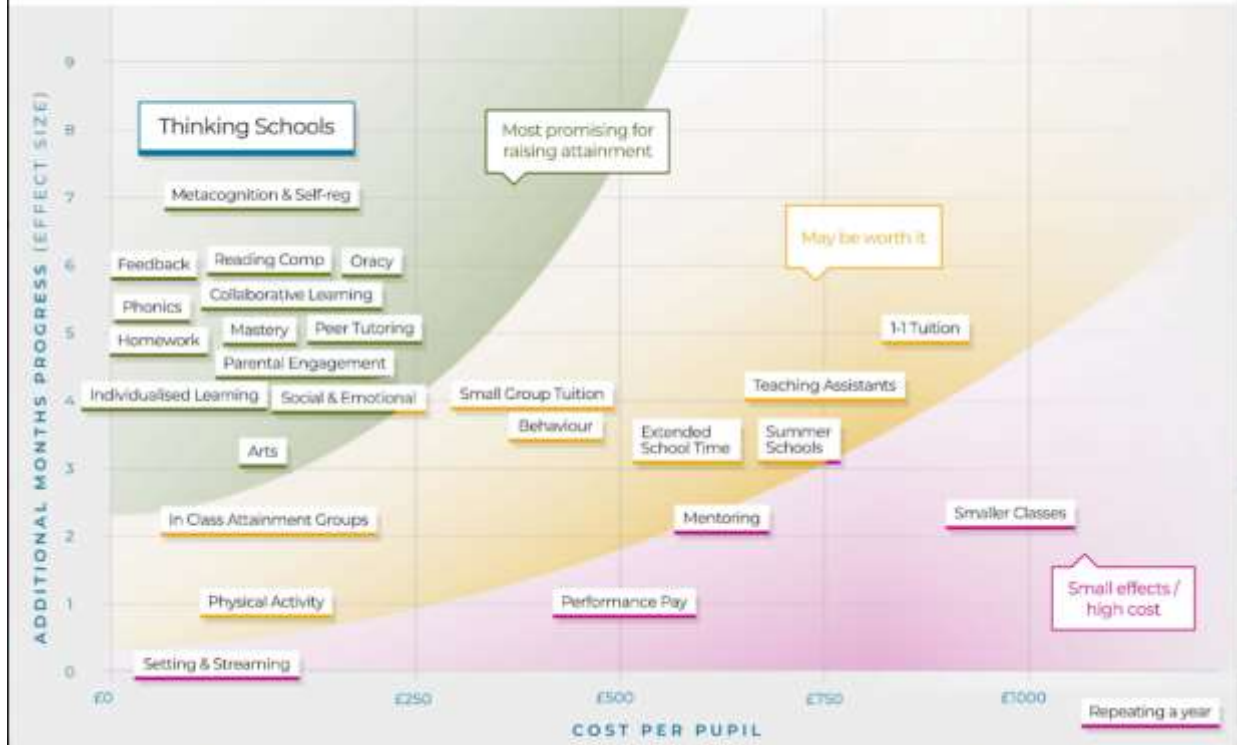
Disadvantaged Year 11 students comprise 40 out of the cohort of 181 (22%)

Barriers to achievement faced by disadvantaged children at Westfield Academy include:

- Affordability of equipment, (including technology outside of school)
- Accessing enrichment activities in and beyond school
- Low prior attainment and low levels of literacy and numeracy
- Low self-esteem, expectations and poor parental engagement
- Little support out of school with homework and revision

Funding for Pupil premium and Disadvantaged students is distributed with reference to research by the Education Endowment Foundation on the most effective strategies used to raise attainment.

Impact vs Cost: Evidence Based Attainment Strategies



In 2021/22 Westfield Academy will allocate Pupil Premium funding in the following ways:

Affordability of equipment	All disadvantaged provided with, and taught to use, programmable calculator	1800
	All year 11 disadvantaged provided with revision resources for GCSE subjects, where advised by HOD	12000
	All KS3 disadvantaged provided with own Chromebook	28000
	Repairs and maintenance of chromebooks for disadvantaged students	3000
	Support for curriculum areas with resources for disadvantaged students: Food, Art and Photography	3000
Accessing enrichment activities	Subsidising activities fund (including Music lesson subsidies)	5000
	Student Intervention and Support Post Improved home school contact. Supporting Departments with trips/visits monitoring engagement /participation	14000
	4Matrix gap analysis software	1000

Low prior attainment, and low levels of literacy and numeracy	Targeted intervention programme, including: Rapid Reader Plus, Literacy Booster, Phonics, Talisman Reading,, Numicon, Emotional Literacy, Nurture Group, Breakfast Club, Lunch Club, EAL, Speech and language Intervention	58000	
	Reduce Maths and English class sizes	30000	
	Exam Reader pens	3800	
Low self-esteem, expectations and poor parental engagement	Additional Ed Psych support	7000	
	Additional pastoral support to support student engagement-supporting attendance, behaviour and well-being: 5 Non-teaching HOY 3 Non-teaching Assistant HOY Attendance Officer PFSA Non-teaching DSL	52000	
	5 Academic Heads of Year to provide academic mentoring and support to disadvantaged students	15000	
	14-19 college courses: Hair & Beauty, Construction and Motor vehicles	3000	
	Drugs Bus	950	
	Homework Support	Homework support club	3000
		Subscription to GCSEPod	6000
		246550	

Costs of group work calculated at £30 per hour for 39 weeks of academic year

4Matrix software is used to monitor the progress of disadvantaged students against their peers in school and nationally and to inform modifications to the strategies listed above.

The effectiveness of this expenditure is monitored by the Governors' Learning and Teaching Sub Committee 3 times a year who compare the progress of disadvantaged students against their peers.

Impact statement
Reduced gap
increased participation in activities

